

CERTIFICATE OF LOCATION OF GOVERNMENT CORNER

East Quarter Corner of Section 3, Township 105, Range 41, 5th. P.M.

STATE OF MINNESOTA, County of MURRAY

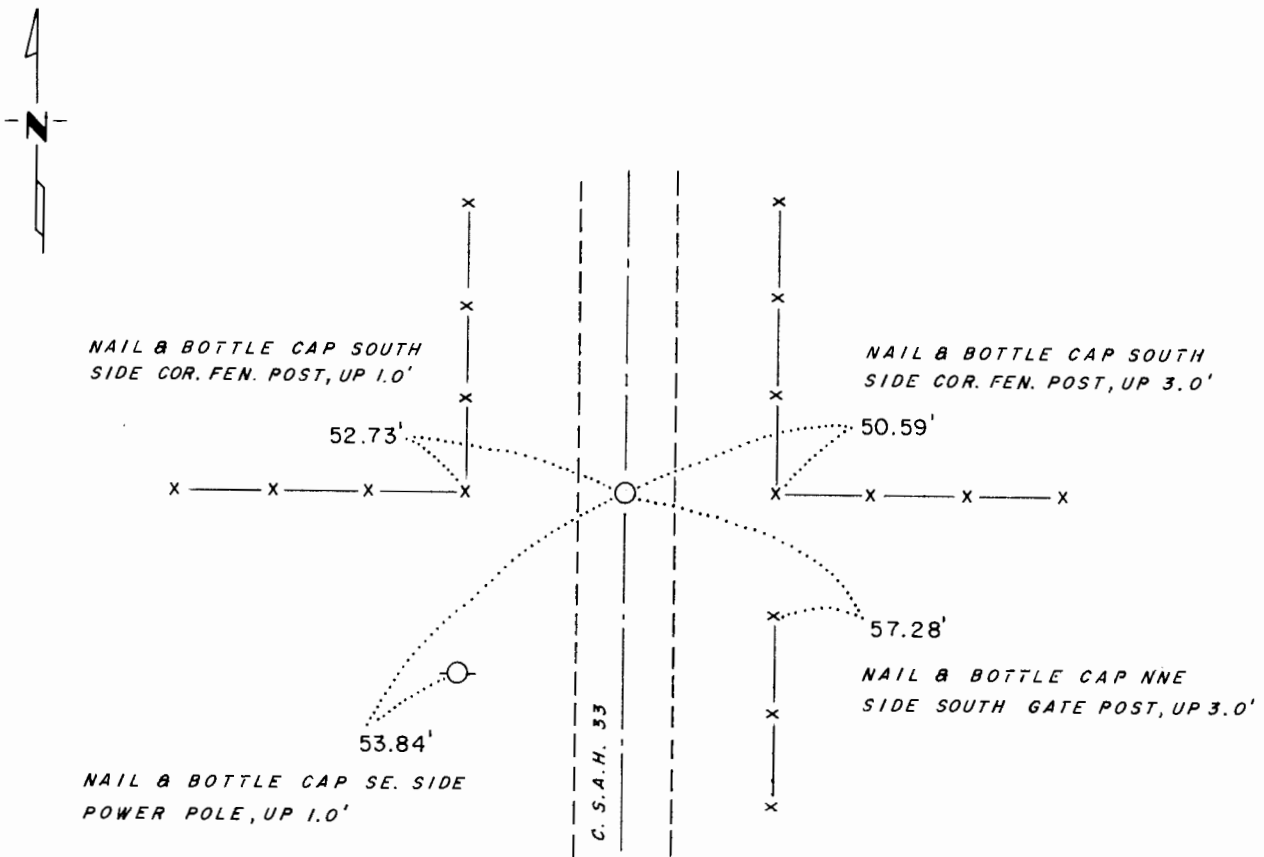
At the corner location shown on the sketch:

On 5-24-77 found a 3/4" Iron Pipe, Down 0.2'
DATE

left monument as found, lowered monument, removed monument (explain)

On 8-7-73 placed a 3/4" Iron Pipe, Down 0.2
DATE

SKETCH OF REFERENCE TIES



NOTE:
NEW TIES TAKEN ON 7-26-77

Statement of evidence relative to this corner location is on back of page.

I hereby certify that this document and the data contained herein was prepared by me or under my direct supervision.

Dany A. Stevenson 7-3-78
SIGNATURE DATE

Registration No. 12684

Land Surveyor, Professional Engineer

County Surveyor, County Engineer

OFFICE OF THE REGISTER OF DEEDS

County of Murray

I hereby certify that this document was filed in the Reg. of Deeds office at 8:30 A.M. on the 7th day of August A.D., 1981

Register of Deeds Willard W. Ohme

By _____, Deputy

DOCUMENT NO. 164274

Statement of Evidence:

East Quarter Corner Section 3, T 105 R 41

Murray County

This corner was originally established by the U.S. General Land Office survey in 1861. The government notes show corner marked with a wood post set in mound of earth with pits and trench dug around the mound.

In May, 1977 the DNR Bureau of Engineering contacted the Murray County Offices of the Recorder, Auditor and Engineer for corner information. No resurvey information was found on this corner.

The DNR in 1957 assumed this corner in the centerline of road north-south and in line with fences east and west.

In 1973, we set an iron pipe at the same location as 1957.

In 1977, we found a 3/4" iron pipe at the above location. We didn't dig for this corner because the road has been cut down. Our distances to the section corners indicate that the fences east and west were set at a split between the corners. Our distance between section corners was 5261.45', with the GLO distance of 5263.5'. GLO lost position for this corner would be 8.85' north and 0.8' west of the iron pipe. The fence to the east is very old and falling down. The fence west is quite old and runs all the way across Section 3. Because of these fences we accept the position of the pipe as the obliterated location of this corner.

ss

164274

State of Minnesota, }
County of Murray, } ss.

I hereby certify that the within instrument
was filed in this office for record on the
7th day of August A.D. 1981,
at 8:30 o'clock A.M., and was duly re-
corded as Microfilm Document No. 164274

Willard W. Ohme
County Recorder